

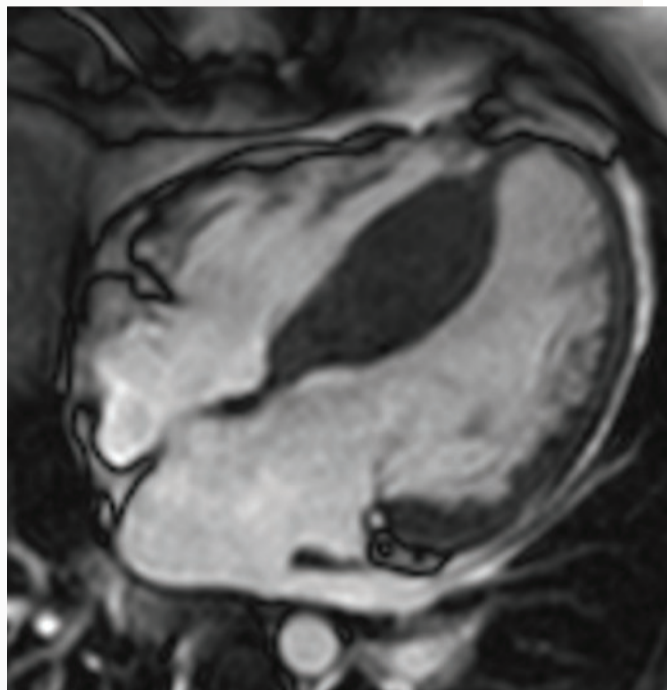


# Wolters Kluwer

When you have to be right

## UpToDate<sup>®</sup>

### Test your Knowledge!



What is the most likely diagnosis shown by cardiac magnetic resonance imaging?

- a. Arrhythmogenic right ventricular cardiomyopathy
- b. Non-ischemic dilated cardiomyopathy
- c. Amyloid cardiomyopathy
- d. Hypertrophic cardiomyopathy
- e. Cardiac angiosarcoma

Answer: d. Hypertrophic cardiomyopathy

Follow us



Get more information about UpToDate at [www.uptodate.com/online](http://www.uptodate.com/online)

[www.wolterskluwer.com](http://www.wolterskluwer.com)  
[www.uptodate.com](http://www.uptodate.com)